

**300D, 310D AND 315D
BACKHOE LOADERS**



JOHN DEERE

PARTS CATALOG

**300D, 310D AND 315D
BACKHOE LOADERS**

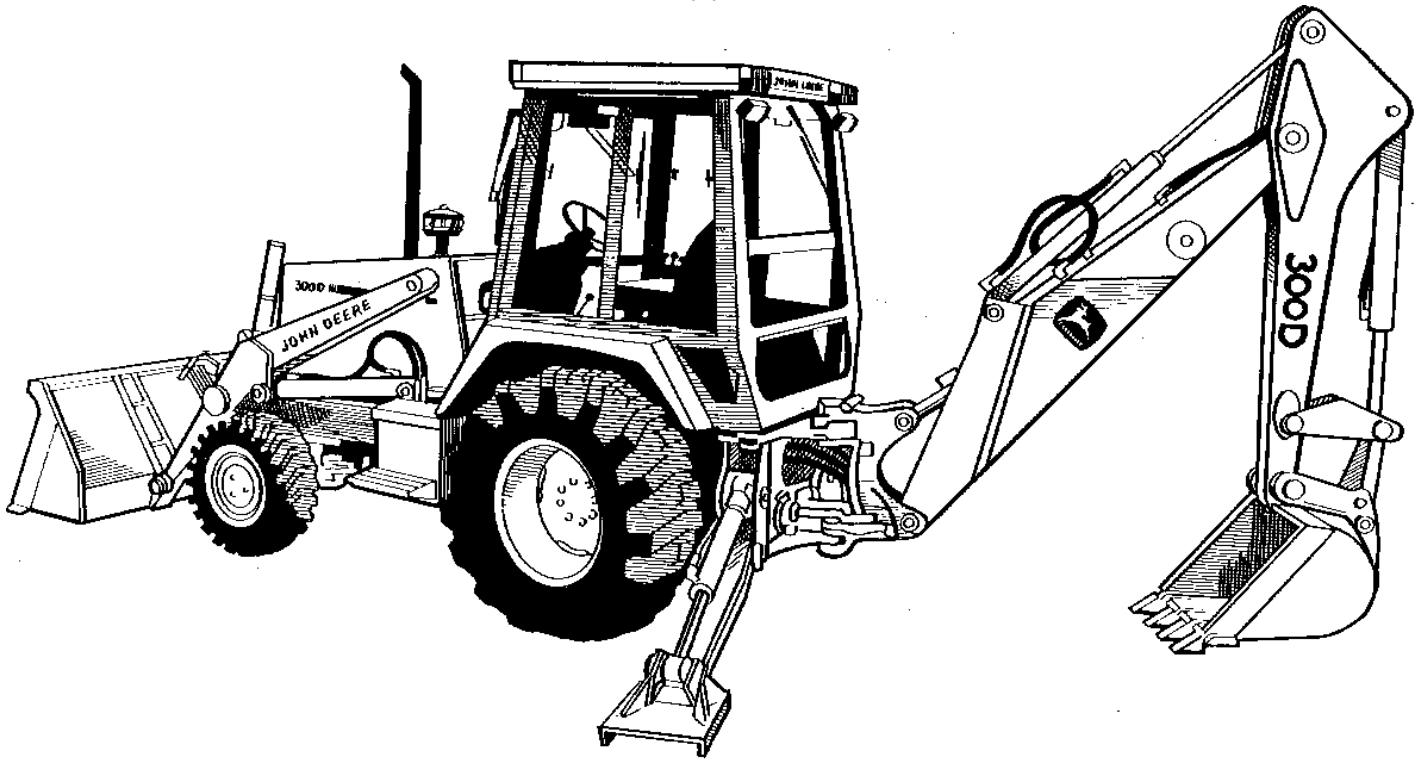
PC2321 (Jul-19) English

Worldwide Construction and Forestry Division

Worldwide Edition
Printed in U.S.A. (Revised)
COPYRIGHT © 2019
DEERE & COMPANY
Moline, Illinois
All rights reserved

Introduction And Customer Information

TP40402 A.1



TP40402

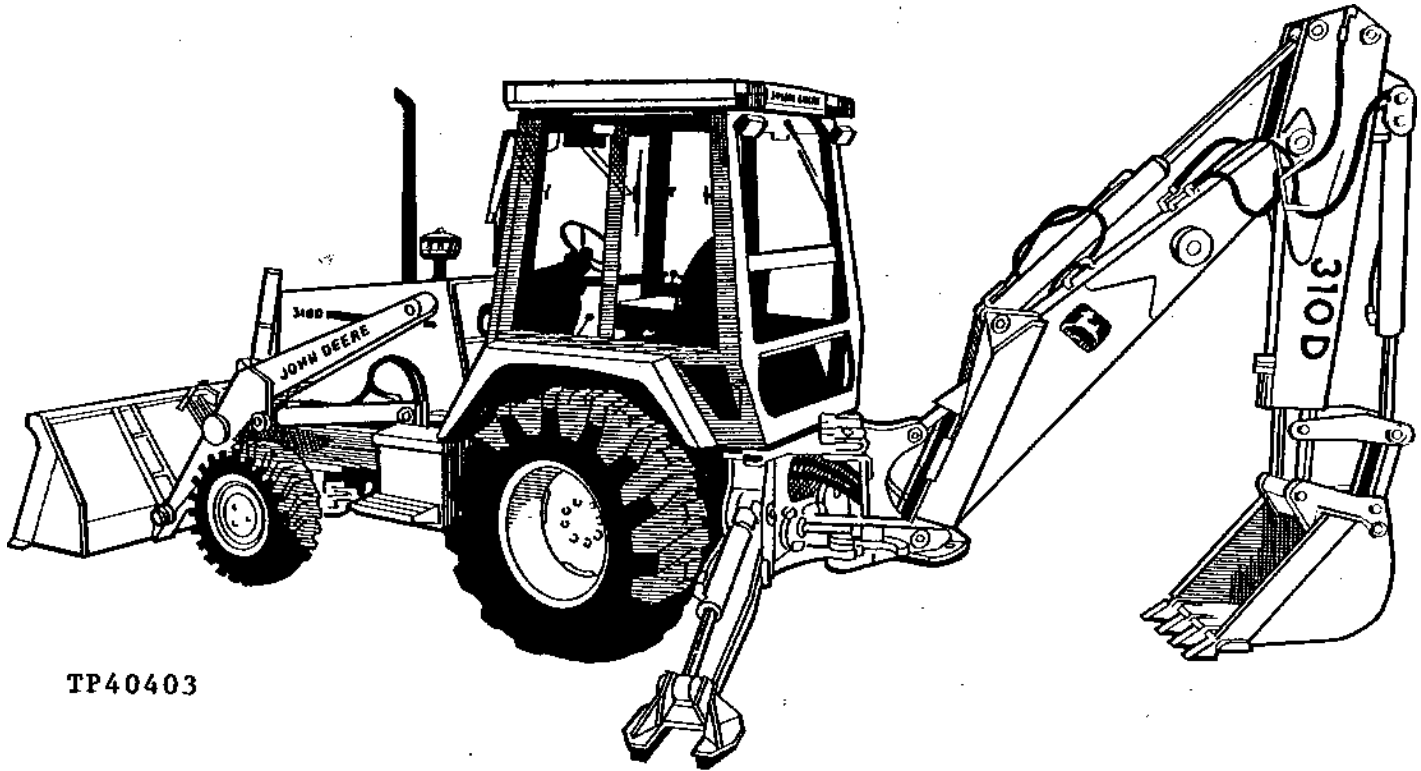
John Deere 300D Backhoe Loader

(Manufactured 1991-1996)

(Specifications And Design Subject To Change Without Notice.)

Introduction And Customer Information

TP40403 A.1



TP40403

John Deere 310D Backhoe Loader

(Manufactured 1991-1996)

(Specifications And Design Subject To Change Without Notice.)

**Thanks very much for your reading,
Want to get more information,
Please click here, Then get the complete
manual**

JustClickHere 

NOTE:

**If there is no response to click on the link above,
please download the PDF document first, and then
click on it.**

**Have any questions please write to me:
admin@servicemanualperfect.com**

To the Customer

The part numbers in this parts catalog were correct at the time your catalog was published. It is our policy to constantly improve our machines, and therefore, part numbers may change. When ordering parts, verify part numbers through your dealer.

SI Units of Measure

Metric dimensions are given, where applicable, throughout this parts catalog.

Bolt and Cap Screw Strength Identification

Bolts and cap screws required to have high-strength qualities equivalent to SAE grade 8 are identified throughout this catalog by the description HS SAE 8 (10.9 for metric). All standard bolts and cap screws are SAE grade 5 (metric 8.8) or lower.

Serial Number Listing Information

Serial number information is listed to show on which machines each part can be used; for example:

- **The part can be used on all products.**
- 000000** - **The part can be used on products beginning with the serial number listed.**
- **000000** **The part can be used on products up to and including the serial number listed.**
- 000000** - **000000** **The part can be used on products between and including the serial number listed.**

When XXXXXX's are listed in place of a serial number, a serial number change was made, but the exact serial number was not available when the catalog was produced.

If product identification numbers or serial numbers are required for warranty claims or correspondence pertaining to this product, it is extremely important that all characters be furnished. This point cannot be overemphasized.

Direction Arrow

Arrows are used with illustrations to indicate the front of the unit. "Right-Hand" and "Left-Hand" sides are determined by facing in direction of machine forward travel.

Box-enclosed Illustrations

A key number, shown in the parts list, is assigned to a box enclosing all parts sold as a service assembly. A box not keyed includes non-current parts.

Complete Goods Listings

Complete Goods are listed in bold face type. Order separately. Do not include on replacement part order.

Orientation of Engine

"Right Hand" and "Left Hand" sides are determined by standing at the flywheel and facing the engine.

John Deere Reman Components

The service parts listed in this catalog are intended for the repair of original equipment components. Although most service parts may be used to repair remanufactured components, the remanufacturing process may change parts sufficiently so that service parts are inadequate or not usable.

Serial Number Locations

Each 300D, 310D And 315D Backhoe Loader May Have Seven Serial Numbers: A Product Identification Number Plate, An Engine Serial Number Plate, A Hydraulic Pump Serial Number, Plate, An Engine Serial Number Plate, A Hydraulic Pump Serial Number, A Reverser Serial Number Plate, A MFWD Axle Serial Number Plate, An Extendible Dipperstick Serial Number And A Transmission Serial Number Plate.

The Product Identification Number Plate Is Located On The Left-Hand Side Frame Near The Front Support Or On The Left-Hand Side Of The Loader Frame Just Above The Lift Cylinder Pivot Boss.

The Engine Serial Number Plate Is Located On The Right-Hand Side Of The Cylinder Block Near The Fuel Pump.

The Reverser Serial Number Plate Is On The Top Left-Hand Side Of The Reverser Housing.

The Extendible Dipperstick Serial Number Is Stamped On The Top Of The Dipperstick Near The Bucket Cylinder Mount.

The MFWD Axle Serial Number Plate Is Located On The Left-Hand (Rear) Side Of The MFWD Axle Housing.

The Transmission Serial Number Is Stamped On The Top Right-Hand Side Of The Transmission.

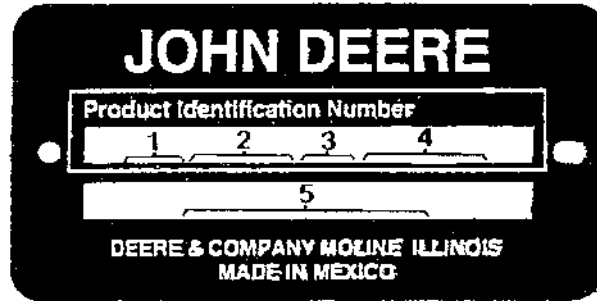
Left-Hand Side, Right-Hand Side, Front And Rear Of The Backhoe Loader Are Viewed By Facing In The Direction Of The Backhoe Loader Forward Travel.

Left-Hand Side, Right-Hand Side, Front And Rear Of The Backhoe And Backhoe Components Are Determined When Seated In The Backhoe Operating Position.

If Product Identification Numbers Or Serial Numbers Are Required For Warranty Claims Or Correspondence Pertaining To This Product, It Is Extremely Important That All Characters Be Furnished. This Point Cannot Be Overemphasized.

Product Identification Number*(Serial No. 850000-) (315D)*

A.1

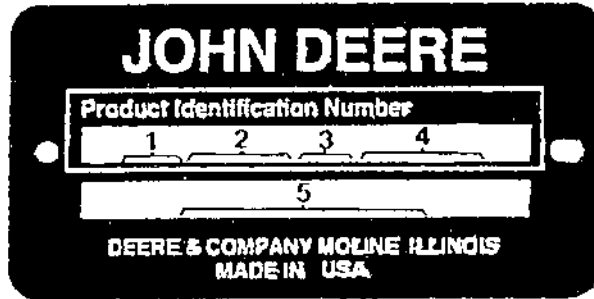


TP48883

First Line	Designation
PO-Industrias John Deere, S.A. De C.V.	Backhoe Loader Manufacturer
315D	Backhoe Loader Model
A-Collar Shift With Reverser	Backhoe Loader Configuration
123456	Backhoe Loader Serial Number
Second Line	Designation
Backhoe Loader	Unit Type

Product Identification Number*(Serial No. -814526) (315D)*

TP48884 A.1

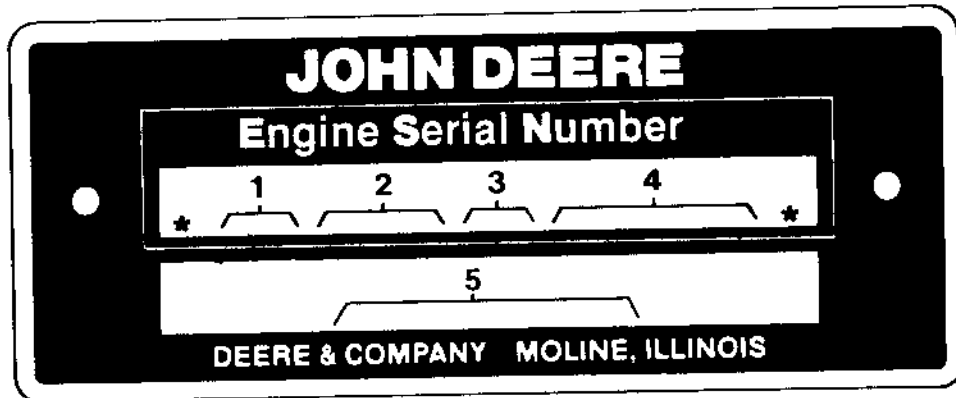


TP48884

First Line	Designates
TO- John Deere Dubuque Works	Backhoe Loader Manufacturer
300D, 310D Or 315D	Backhoe Loader Model
Collar Shift With Reverser	Backhoe Loader Configuration
123456	Backhoe Loader Serial Number
Second Line	Designates
Backhoe Loader	Unit Type

Engine Serial Number Plate

A.1



First Line	Designates
T-John Deere Dubuque Works	1. Engine Manufacturer
4039 (3.9 Liter)	2. Number Of Cylinders And Liters
TT Turbocharged Engine	3. Fuel Type Or Special Condition
DT Non-Turbocharged Engine	
	4. Engine Serial Number
Second Line	Designates
See Following Table	5. The Engine Application And Factory User.

Engine Model	Backhoe Loader Model
4039DT007	300D
4039DT012	300D
4039DT010	300D
4039DT013	300D
4039DT008	310D, 315D
4039DT014	310D, 315D
4039TT002	310D, 315D
4039TT004	310D, 315D
4039TT003	310D, 315D
4039TT005	310D, 315D

MFWD Axle Serial Number Plate

TP19438 A.1

Zahnradfabrik Passau GmbH

Type Serial No.

Parts List No. Total Ratio/Version

Oil Ltri List of Lubricants

Customer's Code No.

TP19438

1. Designates customer's code number	John Deere Part Number
2. Designates type of lubricant	M1L-L-2105B, SAE90
3. Designates ZF-parts-list number	4464 006 101
4. Designates axle type	AP-11H
5. Designates axle serial number	12345
6. Designates total ratio of the axle	20.28
7. Designates version	Sp. Diff. (with or without self-locking differential)
8. Designates lubricant specification	05
9. Designates capacity	LTR (differential carrier and planetary gear assembly)

Trademarks

Throughout this parts catalog, you may find the following Deere and Company trademarks:

Best Bid™	CounterParts™	DEERE™ (Deere™)
Dura-Trax™	Fanggs™	Guardian™
HTH™	Jagz™	JDLink™
MARKS™	MIC™ [Machine Information Center]	MTH™
Power Curve™	PowerIel™	PowerShift Plus™
Powerwize™	POWR SAVR™	PowrShift™
ProPath™	Quad-Cool™	Quik-Tatch™
SC-2™	Side-Tracker™	Stinger™
StructureALL™	Swamper™	TMC™ [Total Machine Control]
ValueSelect™	Waratah™	Worksite Pro™
FlexBox™	Funk™	iTorque™
Phoenix™	Phoenix International™	PowerTech™
PowerTech™ E	PowerTech™ M	PowerTech™ Plus
Precision Joint™	SHIFT-O-MATIC™	SWEDA™ (Super Wide Extreme Dual Axle)
TeamMate™	TeamMate™ II	TeamMate™ IV
TMII™	TMIII™	

Remarks and Abbreviations

The following remarks and abbreviations may appear throughout this parts catalog. Refer to the following table for translations.

Phrase	Meaning	Phrase	Meaning
ALSO ORDER, ORD W/	Also Order	MFWD	Mechanical Front Wheel Drive
AMP	Ampere	NA, NOT USED THIS APPL	Not used in this application
APPL, APPL ONLY	This application only	NLA	No longer available
AR	As required	NSEP	Not available separately
ASSY	Complete assembly	OD	Outside diameter
BOAC	Bolt-on cutting edge	OPTIONAL	Optional
CCW	Counterclockwise	OR	Or
COMPLETE	Complete	ORD, ORDER	Order
COMPLETE GOODS	Complete goods	OS	Oversize
CONVENIENCE ASSY, CA	Convenience assembly	OUTER	Outer
CTL, CUT TO LENGTH	Cut to length	PKG, PACKG	Package, Packet of
CW	Clockwise	PTO	Power Take Off
ENGINE	Engine	RATIO	Ratio
FOR	For	REAR	Rear
FRONT	Front	REMAN	Remanufactured
GAS	Gasoline	REPL	Replaces
HFWD	Hydraulic Front-Wheel Drive	RH	Right-hand
HP	Horsepower	SN	Serial number
HS, HEAD MARKED	High Strength, head marked	STD	Standard
ID	Inside diameter	SUB	Replaced by
INCH	Inch	SUB COMPONENTS	Substitute components (of the kit or assy)
INCL KEYS	Includes keys...	SUB FOR	Substitutes for
INCL, INCLUDES	Includes...	TEETH, Z	Number of gear teeth
INCLUDES PARTS/ ITEMS MARKED	Includes parts/items marked...	TK	Thickness
INNER	Inner	UP, UPPER	Upper
KIT	Kit	US	Undersize
L	Number of links	USE UNTIL EXHAUSTED	Use until exhausted
LF, LINE FILL	Line Fill	USE WITH	Use with
LGP	Low Ground Pressure	VEC	Vehicle Electronic Controller
LGTH	Length	VLC	Vehicle Load Center
LT	Long Track	WHOLE GOODS	Whole Goods
MAKE FROM, MF	Make from	WT	Wide Tracks
MARKED	Marked	XLT	Extra Long Track
MATCHED SET	Matched set		

Table of Contents

01 Wheels & Tires & Tracks	
0110 Powered Wheels, Tires & Fastenings	64
0120 Non-powered Wheels, Tires & Fastening	66
02 Axles, Differentials & Suspension Systems	
0201 Drive Axle Hsg & Support (Inc. Final Drives)	68
0210 Differential Or Bevel Drive	70
0230 Non-powered Wheel Axles	76
0250 Axle Shaft, Bearings, Reduction Gears	82
03 Transmission	
0315 Controls	110
0325 Input Drive Shafts & U-joints.....	124
0341 Housing, Covers and Complete Transmissions.....	126
0350 Gears, Shafts & Power Shift Clutches	146
0360 Transmission Hydraulics.....	156
04 Engine	
0401 Crankshaft And Main Bearing.....	174
0402 Camshaft And Valve Actuating Means	176
0403 Connecting Rods And Pistons	180
0404 Cylinder Block.....	182
0407 Engine Oiling System	192
0408 Ventilating System	200
0409 Cylinder Head and Valves	202
0410 Exhaust Manifold	204
0413 Fuel Injection System	206
0414 Intake Manifold	214
0415 Engine Balancer	216
0416 Turbocharger	218
0417 Water Pump.....	220
0418 Thermostats, Housing & Water Piping.....	222
0419 Engine Oil Cooler.....	224
0420 Fuel Filter.....	226
0421 Fuel Transfer Pump	230
0422 Starting Motor And Fastenings	232
0423 Alternator And Generator Mounting.....	240
0429 Fan Drive (Damper, Idler, Pulleys, & Belt).....	242
0433 Flywheel, Housing & Fastenings	244
0452 Gasket Replacement Kits	246
05 Engine Auxiliary System	
0505 Cold Weather Starting Aids	250
0510 Engine Cooling Systems.....	254
0515 Engine Speed Controls.....	264
0520 Intake System.....	266
0530 External Exhaust Systems.....	282
0540 Engine Mounting.....	286
0560 External Fuel Supply Systems.....	288
06 Torque Converter	
0641 Converter/Retarder Housing & Cover.....	298
09 Steering System	
0960 Power Steering Hydraulic System	300
10 Service Brakes	
1011 Service Brake Active Elements.....	326
1060 Service Brakes Hydraulics.....	330

Table of Contents - Continued

11 Parking Brakes	
1115 Controls Linkage	334
13 Miscellaneous Vehicle	
1313 Hand Tools	340
1320 Vehicle Finish & Trim	344
1330 Shipping & Packaging	352
1369 Greases, Oils, Fuels & Coolants	356
1370 Lubrication Systems	372
1399 Fuel Filter	376
16 Vehicle Electrical Systems	
1671 Batteries, Support & Cables	378
1672 Alternator, Regulator & Charging System Wiring	388
1673 Vehicle Lighting System	392
1674 Wiring Harness And Switches	402
1676 Instruments & Indicators	436
17 Frame Chassis Or Supporting Structure	
1740 Frame Installation	438
1746 Frame Bottom Guards	444
1749 Chassis Weights	448
18 Operators Station	
1810 Operator Enclosure	452
1821 Seat And Seat Belts	488
1822 Steps & Handholds	512
1830 Heating & Air Conditioning	514
19 Sheet Metal & Styling	
1910 Hood Or Engine Enclosure	574
1913 Miscellaneous Shields	580
1921 Grille & Grille Housing	584
1927 Fenders	590
20 Safety, Convenience & Miscellaneous	
2001 Radio	594
2002 Mirror	596
2004 Warning Devices Including Horn & Reverse Alarm	598
2005 Toolbox	606
21 Vehicle Main Hydraulic System	
2160 Vehicle Hydraulics	608
31 Loader	
3102 Bucket (Including Teeth)	662
3115 Controls Linkage	680
3140 Frames	704
3160 Loader Hydraulics	708
33A Backhoe & Excavator	
3301 Blades & Side Cutters	802
3302 Bucket With Teeth	804
3315 Controls Linkage	824
3340 Backhoe & Excavator Frames	876
3360 Hydraulic System	912
33B Backhoe & Excavator	
3360A Hydraulic System	1000

Alphabetical Index

	Page	Page
A		
A/C COMPRESSOR DRIVE BELT (790702 -)	556	
Absorber, Backhoe Street Pads	880, 881	
Absorber, Seat Suspension And Shock Absorber (With Suspended Seat)	506	
ACCESSORY RELAY (- 778668)	408, 410	
ACCESSORY RELAY (778669 -)	412, 414	
Actuator, Bucket Leveling and Return-to-Dig Linkage (- 802199)	680	
Actuator, Bucket Leveling and Return-to-Dig Linkage (- 814526)	682	
Actuator, Bucket Leveling and Return-to-Dig Linkage (802200 -)	684	
Actuator, Bucket Leveling and Return-to-Dig Linkage (850000 -)	686	
ACTUATOR, PARK BRAKE	336	
Actuator, PARK BRAKE ACTUATOR AND CONTROLS	336	
ADHESIVE, SILICONE RUBBER	354	
ADJUSTER HEIGHT KIT 300D	510	
ADJUSTER HEIGHT SPRING 300D	510	
ADJUSTER LATCH KIT 300D	494	
ADJUSTER PUCK KIT 300D	494	
ADJUSTER, SEAT WITH SUSPENDED SEAT (- 815114)	488	
ADJUSTING STRAP, ALTERNATOR	240	
Air Cleaner (w/o Turbocharger)	271	
Air Cleaner (With Turbocharger)	266	
AIR CLEANER (WITH TURBOCHARGER)	266	
AIR CLEANER (WITHOUT TURBOCHARGER)	271	
AIR CLEANER BRACKET (WITH TURBOCHARGER) (- 802199)	267	
AIR CLEANER BRACKET (WITH TURBOCHARGER) (- 814526)	268	
AIR CLEANER BRACKET (WITH TURBOCHARGER) (802200 -)	269	
AIR CLEANER BRACKET (WITH TURBOCHARGER) (850000 -)	270	
AIR CLEANER BRACKET (WITHOUT TURBOCHARGER) (- 802199)	272	
AIR CLEANER BRACKET (WITHOUT TURBOCHARGER) (- 814526)	273	
AIR CLEANER BRACKET (WITHOUT TURBOCHARGER) (802200 -)	274	
AIR CLEANER BRACKET (WITHOUT TURBOCHARGER) (850000 -)	275	
Air Cleaner Bracket And Hose (w/o Turbocharger) (- 802199)	272	
Air Cleaner Bracket And Hose (w/o Turbocharger) (- 814526)	273	
Air Cleaner Bracket And Hose (w/o Turbocharger) (802200 -)	274	
Air Cleaner Bracket And Hose (w/o Turbocharger) (850000 -)	275	
Air Cleaner Bracket And Hose (With Turbocharger) (- 802199)	267	
Air Cleaner Bracket And Hose (With Turbocharger) (- 814526)	268	
Air Cleaner Bracket And Hose (With Turbocharger) (802200 -)	269	
Air Cleaner Bracket And Hose (With Turbocharger) (850000 -)	270	
AIR CLEANER ELEMENT (WITH TURBOCHARGER)	266	
AIR CLEANER ELEMENT (WITHOUT TURBOCHARGER)	271	
AIR CLEANER FILTER	266, 271, 376	
AIR CLEANER HOSE (WITH TURBOCHARGER) (- 802199)	267	
AIR CLEANER HOSE (WITH TURBOCHARGER) (- 814526)	268	
AIR CLEANER HOSE (WITH TURBOCHARGER) (802200 -)	269	
AIR CLEANER HOSE (WITH TURBOCHARGER) (850000 -)	270	
AIR CLEANER HOSE (WITHOUT TURBOCHARGER) (- 802199)	272	
AIR CLEANER HOSE (WITHOUT TURBOCHARGER) (- 814526)	273	
AIR CLEANER HOSE (WITHOUT TURBOCHARGER) (802200 -)	274	
AIR CLEANER HOSE (WITHOUT TURBOCHARGER) (850000 -)	275	
AIR CLEANER VACUUM SENSOR	276	
AIR COMPRESSOR CLUTCH KIT (790702 -)	559	
AIR COMPRESSOR STATOR KIT (790702 -)	559	
Air Conditioner O-Ring Repair Kit (Parts Listed Below Are Not Illustrated)	352	
AIR CONDITIONING (FREEZE/COMPRESSOR) SWI TCH (816287 -)	536	
AIR CONDITIONING (FREEZE/COMPRESSOR) SWI TCH (850000 -)	538	
AIR CONDITIONING BOX (- 850000)	534	
AIR CONDITIONING BOX (801200 - 816286)	530	
AIR CONDITIONING BOX (816287 -)	532, 536	
AIR CONDITIONING BOX (850000 -)	538	
AIR CONDITIONING BRACKET (790702 -)	556	
AIR CONDITIONING BRACKETS (- 802199)	544	
AIR CONDITIONING BRACKETS (- 814526)	546	
AIR CONDITIONING COMPRESSOR (790702 -)	556, 559	
Air Conditioning Compressor And Manifold (R134A Refrigerant) (790702 -)	559	
AIR CONDITIONING COMPRESSOR CLUTCH AND SERVICE VALVES (- 790701)	558	
AIR CONDITIONING COMPRESSOR HARDWARE KIT (- 790701)	563	
Air Conditioning Compressor Hardware Kit (R134A Refrigerant)	564	
Air Conditioning Compressor Lubricant	362	
AIR CONDITIONING COMPRESSOR SEAL KIT (- 790701)	560	
Air Conditioning Compressor Seal Kit (R134A Refrigerant) (790702 -)	562	
AIR CONDITIONING CONDENSER AND HOSES (816287 -)	570	
Air Conditioning Condenser and Hoses (850000 -)	572	
Air Conditioning Condenser, Receiver Dryer And Hoses (- 814526)	568	
AIR CONDITIONING CONDENSER, RECEIVER DRYER AND HOSES (- 816286)	566	
Air Conditioning Drive Belt, Brackets And Support (R134A Refrigerant) (790702 -)	556	
AIR CONDITIONING DUCTS (- 816287)	522	
AIR CONDITIONING DUCTS (- 850000)	524	
AIR CONDITIONING DUCTS (801200 - 816286)	520	
AIR CONDITIONING EVAPORATOR COIL (- 850000)	534	
AIR CONDITIONING EVAPORATOR COIL (801200 - 816286)	530	
AIR CONDITIONING EVAPORATOR COIL (816287 -)	532, 536	
AIR CONDITIONING EVAPORATOR COIL (850000 -)	538	
AIR CONDITIONING FILTERS (- 850000)	534	
AIR CONDITIONING FILTERS (801200 - 816286)	530	
AIR CONDITIONING FILTERS (816287 -)	532, 536	
AIR CONDITIONING FILTERS (850000 -)	538	
AIR CONDITIONING FRESH AIR INTAKE (- 816287)	522	
AIR CONDITIONING FRESH AIR INTAKE (- 850000)	524	
AIR CONDITIONING FRESH AIR INTAKE (801200 - 816286)	520	
AIR CONDITIONING HIGH PRESSURE SWITCH	426	
AIR CONDITIONING HOUSING (- 850000)	534	
AIR CONDITIONING HOUSING (801200 - 816286)	530	
AIR CONDITIONING HOUSING (816287 -)	532, 536	
AIR CONDITIONING HOUSING (850000 -)	538	
AIR CONDITIONING LOW PRESSURE SWITCH	426	
AIR CONDITIONING LUBRICANT	356	
AIR CONDITIONING MOTOR (- 802199)	544	
AIR CONDITIONING MOTOR (- 814526)	546	
AIR CONDITIONING MOTOR (802200 - 816286)	548	
AIR CONDITIONING MOTOR (816287 -)	550	
AIR CONDITIONING MOTOR (850000 -)	552	
AIR CONDITIONING MOTOR RESISTOR (802200 - 816286)	548	
AIR CONDITIONING REFRIGERANT COMPRESSOR MOUNT (- 790701)	554	
AIR CONDITIONING SWITCH	436	
AIR CONDITIONING VALVE (- 814526)	568	
AIR CONDITIONING VALVE (- 816286)	566	
AIR CONDITIONING VALVE (816287 -)	570	
AIR CONDITIONING VALVE (850000 -)	572	
AIR CONDITIONING WIRING HARNESS	426	
AIR CONDITIONING WIRING HARNESS AND SWITCHES	426	
AIR CONDITIONING/COMPRESSOR HARDWARE KIT (- 790701)	563	
AIR CONDITIONING, HEATING, VENTILATION (816287 -)	536	
AIR CONDITIONING, HEATING, VENTILATION (850000 -)	538	
Air Intake System	215	
Air Intake System (With Turbocharger)	214	
AIR STACK CAP	284	
ALARM SYSTEM, BACK-UP (- 781840)	600	
ALARM SYSTEM, BACK-UP (- 802199)	602	
ALARM SYSTEM, BACK-UP (- 814526)	603	
ALARM SYSTEM, BACK-UP (802200 -)	604	
ALARM SYSTEM, BACK-UP (850000 -)	605	
ALTERNATOR (- 817881)	390	
Alternator (78 Amp) (- 778740)	388	
Alternator (78A, Delco-Remy 10480058) (778741 - 787513)	389	
ALTERNATOR (817882 -)	391	
ALTERNATOR ADJUSTING STRAP	240	
Alternator And Attaching Parts (- 817881)	390	
Alternator And Attaching Parts (817882 -)	391	
ALTERNATOR ATTACHING PARTS (- 817881)	390	
ALTERNATOR ATTACHING PARTS (817882 -)	391	
ALTERNATOR CAPACITOR (817882 -)	391	
ALTERNATOR FAN (817882 -)	391	
ALTERNATOR HARNESS	416, 418	
ALTERNATOR HARNESS DIODE	416, 418	
Alternator Mounting Brackets	240	
ALTERNATOR PULLEY (- 817881)	390	
ALTERNATOR PULLEY (817882 -)	391	
ALTERNATOR RELAY, (6 VOLT) (778669 -)	414	
ALTERNATOR RELAY, 6-VOLT (- 778668)	408, 410	
ALTERNATOR RELAY, 6-VOLT (778669 -)	412	
Alternator Reman	390	
ALTERNATOR SHIELD (- 817881)	390	
Alternator, Alternator And Attaching Parts (- 817881)	390	
Alternator, Alternator And Attaching Parts (817882 -)	391	

Alphabetical Index - Continued

Page	Page		
Alternator, Alternator Reman, Alternator And Attaching Parts (- 817881).....	390	Auxiliary Valve Section (Gresen) (- 797952).....	957
Alternator, Alternator Reman, Alternator And Attaching Parts (817882 -).....	391	Auxiliary Valve Section (Gresen) (797953 - 802199).....	958
Alternator, Engine Wiring Harness.....	416	AUXILIARY VALVE, LOADER (802200 -).....	759
Anchor, BRAKE BAND, LINING AND LINKAGE.....	334	AUXILIARY VALVE, LOADER (850000 -).....	760
ANGLE, BACKREST ADJUSTMENT 300D.....	500	AUXILIARY, REAR HYDRAULICS (801200 -).....	656
Antenna, Antenna Cable, Radio, Harness And Speakers (For Use With Cab Only).....	594	AXLE BEVEL, DIFFERENTIAL (MFWD) (- 796033).....	100
ANTENNA, RADIO.....	594	AXLE BEVEL, DIFFERENTIAL (MFWD) (796034 -).....	102
Antenna, Radio, Harness And Speakers (For Use With Cab Only).....	594	AXLE CASING (MFWD) (- 796033).....	88
ANTI-CAVITATION CHECK VALVE (- 784145).....	732	AXLE CASING (MFWD) (796034 -).....	90
ANTI-CAVITATION CHECK VALVE (784146 - 797440).....	726	AXLE HOUSING ASSEMBLY (MFWD) (796034 -).....	90
ANTI-SKID MAT.....	484	AXLE HOUSING, DIFFERENTIAL (MFWD) (- 796033).....	104
ARM RESTS 300D.....	500	AXLE HOUSING, REAR.....	68
ARM RESTS, 300D.....	492	AXLE JOINT ASSEMBLY (MFWD) (- 796033).....	88
Arm, Brake Valve and Pedals.....	330	AXLE JOINT ASSEMBLY (MFWD) (796034 -).....	90
ARM, DIFFERENTIAL LOCK (- 802199).....	71	AXLE PIVOT PIN.....	78
ARM, DIFFERENTIAL LOCK (- 814526).....	72	AXLE PIVOT PIN (MFWD).....	108
Arm, DIFFERENTIAL LOCK PEDAL AND LINKAGE (- 802199).....	71	AXLE SHAFT, REAR.....	82
Arm, Differential Lock Pedal and Linkage (- 814526).....	72	AXLE, DIFFERENTIAL (MFWD) (- 796033).....	100
Arm, DIFFERENTIAL LOCK PEDAL AND LINKAGE (802200 -).....	73	AXLE, DIFFERENTIAL (MFWD) (796034 -).....	102
Arm, Differential Lock Pedal and Linkage (850000 -).....	74	AXLE, FRONT (MFWD) (- 796033).....	84
Arm, Engine Speed Control Linkage.....	264	AXLE, FRONT (MFWD) (796034 -).....	85
Arm, FRONT WINDOW WIPER MOTOR.....	480	AXLE, FRONT (WITHOUT MFWD).....	78
ARM, LOADER LIFT.....	704	Axle, Front Axle Housing and Tie Rods (w/ MFWD) (- 796033).....	84
Arm, Loader Lift Arm.....	704	Axle, Front Axle Housing and Tie Rods (w/ MFWD) (796034 -).....	85
Arm, Main Frame (850000 -).....	442	Axle, Front Axle, Front Axle, Spindle And Knuckle Assembly.....	78
Arm, PARK BRAKE ACTUATOR AND CONTROLS.....	336	AXLE, LOWER PLATE.....	69
ARM, REVERSER CONTROL (- 792482).....	130	AXLE, MOUNTING CAPSCREWS.....	69
Arm, Rocker Arm Shaft, Rocker Arm Shaft, Push Rods and Rocker Arms.....	177	Axle, Rear Axle Drive Shaft.....	82
Arm, Rocker Arm, Rocker Arm Shaft, Push Rods and Rocker Arms.....	177		
Arm, Seat Base With Turntable (With Suspended Seat) (- 815114).....	490	B	
Arm, SEAT SUSPENSION ARMS AND SHAFTS.....	508	B00M LOCK PIN (315D).....	910
Arm, STABILIZER AND SLIDING FRAME.....	904	BACK PAD CUSHION 300D.....	500
ARM, SUSPENSION SEAT.....	508	BACK, SEAT 300D.....	502
ARM, WIPER (FRONT RIGHT CAB WINDSHIELD, WITHOUT DOOR).....	478	BACK-UP ALARM SWITCH (- 781840).....	600
Arm, Wiper Arm, Cab One Piece Front Windshield Glass And Wiper Motor (W/O Right Cab Door).....	478	BACK-UP ALARM SWITCH (- 802199).....	602
Arm, Wiper Arm, Left-Hand Cab Door And Wiper (Two Door).....	474	BACK-UP ALARM SWITCH (- 814526).....	603
Arm, Wiper Arm, RIGHT-HAND CAB DOOR AND WIPER.....	476	BACK-UP ALARM SWITCH (802200 -).....	604
Arm, Wiper Arm, UPPER REAR CAB WINDOW AND REAR WINDOW WIPER MOTOR.....	470	BACK-UP ALARM SWITCH (850000 -).....	605
Armature, Electric Detent Positioner (Bucket Section) (With Return To Dig) (- 802199).....	716	Back-Up Alarm System (- 781840).....	600
Armature, Electric Detent Positioner (Bucket Section) (With Return To Dig) (- 814526).....	717	Back-Up Alarm System (- 802199).....	602
ARMATURE, STARTING MOTOR.....	237	Back-Up Alarm System (- 814526).....	603
Armature, STARTING MOTOR COIL ASSEMBLY, HOUSING AND ARMATURE.....	237	Back-Up Alarm System (802200 -).....	604
Armrest, Armrest Kit, SEAT CUSHIONS AND ARM RESTS.....	492	Back-Up Alarm System (850000 -).....	605
Armrest, Armrest Kit, SEATS, SEAT BELTS, AND ARM REST.....	500	BACKHOE AND LOADER LINKAGE SHIELDS (- 802199).....	907
Armrest, SEAT CUSHIONS AND ARM RESTS.....	492	Backhoe And Loader Linkage Shields (- 814526).....	908
Armrest, SEATS, SEAT BELTS, AND ARM REST.....	500	BACKHOE AND LOADER LINKAGE SHIELDS (2 LEVER-6TH FUNCTION) (802200 -).....	909
ARMS, ROCKER.....	177	BACKHOE AND STABILIZER VALVE PRESSURE AND RETURN HYDRAULICS (- 802199).....	1002, 1004
ASSEMBLY, AXLE JOINT (MFWD) (- 796033).....	88	Backhoe And Stabilizer Valve Pressure And Return Hydraulics (- 814526).....	1006
ASSEMBLY, AXLE JOINT (MFWD) (796034 -).....	90	BACKHOE AND STABILIZER VALVE PRESSURE AND RETURN HYDRAULICS (802200 -).....	1008
ASSEMBLY, BALL JOINT (MFWD) (- 796033).....	88	Backhoe And Stabilizer Valve Pressure And Return Hydraulics (850000 -).....	1010
ASSEMBLY, BALL JOINT (MFWD) (796034 -).....	90	Backhoe Boom.....	889
ASSEMBLY, BLOWER (816287 -).....	550	BACKHOE BOOM.....	890
ASSEMBLY, BLOWER (850000 -).....	552	BACKHOE BOOM CYLINDER (300D) (- 818141).....	1026
ATTACHING PARTS, ALTERNATOR (- 817881).....	390	BACKHOE BOOM CYLINDER (310D, 315D).....	1028
ATTACHING PARTS, ALTERNATOR (817882 -).....	391	BACKHOE BOOM CYLINDER (310D, 315D) (REPLACEMENT).....	1029
ATTACHING PINS KIT.....	818	BACKHOE BOOM CYLINDER HYDRAULICS (315D).....	992
AUXILIARY CONTROL, ROCKER SWITCH (- 802199).....	628	BACKHOE BOOM CYLINDER PINS (300D) (- 818141).....	1026
AUXILIARY CONTROL, ROCKER SWITCH (802200 -).....	630	BACKHOE BOOM CYLINDER PINS (300D) (818142 -).....	1027
AUXILIARY LOW-FLOW SOLENOID VALVE.....	660	BACKHOE BOOM CYLINDER PINS (310D, 315D).....	1028, 1029
Auxiliary Section.....	969, 980	BACKHOE BOOM CYLINDER REPAIR KIT (300D) (- 818141).....	1026
Auxiliary Section (Third Function) (Husco) (802200 -).....	759	BACKHOE BOOM CYLINDER REPAIR KIT (300D) (818142 -).....	1027
Auxiliary Section (Third Function) (Husco) (850000 -).....	760	BACKHOE BOOM CYLINDER REPAIR KITS (310D, 315D).....	1028, 1029
AUXILIARY SECTION, BACKHOE VALVE (300D).....	969	BACKHOE BOOM PIN.....	889, 890
AUXILIARY SECTION, BACKHOE VALVE (310D, 315D).....	980	BACKHOE BOOM STOP KIT.....	890
Auxiliary Solenoid Valve (Low-Flow).....	660	Backhoe Bucket (762mm (30") STD, HD, AND EHD).....	811
AUXILIARY SOLENOID VALVE KIT, LOW FLOW (- 802199).....	658	Backhoe Bucket (914mm (36") 10 CBC FT AND 14.5 CBC FT).....	812, 813
AUXILIARY VALVE.....	632	Backhoe Bucket (914mm (36") Ditching 10 CBC FT AND 14.5 CBC FT).....	814
Auxiliary Valve (Husco) (802200 -).....	748	BACKHOE BUCKET COUPLER.....	804, 805
Auxiliary Valve (Husco) (850000 -).....	749	BACKHOE BUCKET CUTTING EDGE.....	818
AUXILIARY VALVE MANUAL POSITIONER (300D) (SERIAL NO. -802199) (- 802199).....	947, 960	BACKHOE BUCKET CYLINDER (300D).....	1030, 1032
AUXILIARY VALVE SECTION (300D) (SERIAL NO. -797952) (- 797952).....	957	BACKHOE BUCKET CYLINDER (300D) (REPLACEMENT).....	1034
		BACKHOE BUCKET CYLINDER (310D, 315D) (- 817497).....	1036
		BACKHOE BUCKET CYLINDER (310D, 315D) (817498 -).....	1038

Alphabetical Index - Continued

Page	Page
BACKHOE BUCKET CYLINDER (SER.NO.817498-) (817498 -) ..	1040
BACKHOE BUCKET CYLINDER HYDRAULICS.....	994
BACKHOE BUCKET CYLINDER HYDRAULICS, EXTE NDIBLE.....	996
BACKHOE BUCKET CYLINDER PINS (300D).....	1030, 1032, 1034
BACKHOE BUCKET CYLINDER PINS (310D,315D) (- 817497)....	1036
BACKHOE BUCKET CYLINDER PINS (310D,315D) (817498 -)....	1038
BACKHOE BUCKET CYLINDER REPAIR KIT (300D)	1030, 1032, 1034
BACKHOE BUCKET CYLINDER REPAIR KITS (310D, 315D) (- 817497).....	1036
BACKHOE BUCKET CYLINDER REPAIR KITS (310D, 315D) (817498 -).....	1038
BACKHOE BUCKET CYLINDER REPAIR KITS (SER.NO.817498-) (817498 -).....	1040
BACKHOE BUCKET DATA	820, 822
BACKHOE BUCKET DATA 12 INCH (305).....	820
BACKHOE BUCKET DATA 18 - 48 INCH (457 - 1219).....	822
BACKHOE BUCKET LINKS,300D (SER. NO. -783645) (- 783645) ..	883
BACKHOE BUCKET LINKS,300D (SERIAL NO. 783646-787833) (783646 - 787833).....	884
BACKHOE BUCKET LINKS,300D (SERIAL NO. 787834-) (787834 -).....	885
BACKHOE BUCKET PINS.....	818
BACKHOE BUCKET PINS (310D AND 315D) (SERIAL NO. -783624) (- 783624).....	886
BACKHOE BUCKET PINS (310D AND 315D) (SERIAL NO. 783619 -) (783619 -).....	887
BACKHOE BUCKET PINS (CASE BUCKET).....	888
BACKHOE BUCKET PINS, 304 MM (12").....	806
BACKHOE BUCKET PINS, 457 MM (18").....	807
BACKHOE BUCKET PINS, 610 MM (24").....	809
BACKHOE BUCKET PINS,300D (SER. NO. -783645) (- 783645) ..	883
BACKHOE BUCKET PINS,300D (SERIAL NO. 783646-787833) (783646 - 787833).....	884
BACKHOE BUCKET PINS,300D (SERIAL NO. 787834-) (787834 -).....	885
BACKHOE BUCKET SHANK, 304 MM (12").....	806
BACKHOE BUCKET SHANK, 457 MM (18").....	807
BACKHOE BUCKET SHANK, 610 MM (24").....	809
BACKHOE BUCKET SHANK, 762 MM (30").....	811
BACKHOE BUCKET SHANK, 914 MM (36").....	812, 813
BACKHOE BUCKET TOOTH, 304 MM (12").....	806
BACKHOE BUCKET TOOTH, 457 MM (18").....	807
BACKHOE BUCKET TOOTH, 610 MM (24").....	809
BACKHOE BUCKET TOOTH, 762 MM (30").....	811
BACKHOE BUCKET TOOTH, 914 MM (36").....	812, 813
BACKHOE BUCKET, 762 MM (30").....	811
BACKHOE BUCKET, 914 MM (36").....	812, 813
BACKHOE BUCKET, REPLACEMENT.....	816, 818
Backhoe Buckets (457mm (18") STD 4.1 CBC. FT) (457mm (18") STD, HD AND EHD 5.1 CBC FT).....	807
Backhoe Buckets (610mm (24") STD 6 CBC FT AND 7.5 CBC FT) (610mm (24") HD 6 CBC FT, 7.5 CBC FT, AND 8.8 CBC FT) (610mm (24") EHD 7.5 CBC FT AND 8.8 CBC FT).....	809
Backhoe Buckets 304mm (12") Standard And Heavy Duty	806
BACKHOE BUCKETS, 304 MM (12").....	806
BACKHOE BUCKETS, 457 MM (18").....	807
BACKHOE BUCKETS, 610 MM (24").....	809
BACKHOE CONTROL LEVER LABEL (- 802199).....	840, 866
BACKHOE CONTROL LEVER LABEL (802200 -).....	848
BACKHOE CONTROL LEVER LINKAGE, 2-LEVER FOR EXTENDIBLE DIPPERSTICK (- 802199).....	866
BACKHOE CONTROL LEVER LINKAGE, 2-LEVER FOR FIFTH FUNCTION PEDAL KIT (802200 -).....	848
BACKHOE CONTROL LEVER LINKAGE, 2-LEVER FOR STANDARD DIPPERSTICK KIT (- 802199).....	840
BACKHOE CONTROL LEVER LINKAGE, TWO LEVER (802200 -).....	836
BACKHOE CONTROL LEVER LINKAGE, TWO LEVER (850000 -).....	838
BACKHOE CONTROL LEVER LINKAGE, TWO LEVER KIT (802200 -).....	842
BACKHOE CONTROL VALVE (300D) (SERIAL NO. -802199) (- 802199).....	940
BACKHOE CONTROL VALVE (310D, 315D).....	970
BACKHOE CONTROL VALVE (300D) (802200 -).....	962
Backhoe Control Valve (Gresen) (- 802199)	940
Backhoe Control Valve (Husco).....	970
Backhoe Control Valve (Husco) (802200 -).....	962
BACKHOE DITCHING BUCKET, 914 MM (36").....	814
BACKHOE EXTENDIBLE DIPPERSTICK HOUSING (- 787831)	894
BACKHOE EXTENDIBLE DIPPERSTICK HOUSING (787832 -).....	895
BACKHOE FRAME LOCK BAR (300D, 310D).....	902
BACKHOE LINKAGE FIELD KIT, 2-LEVER FOR EXTENDIBLE DIPPERSTICK (- 802199).....	866
BACKHOE LINKAGE FIELD KIT, 2-LEVER FOR FIFTH FUNCTION PEDAL (802200 -).....	848
BACKHOE LINKAGE FIELD KIT, 2-LEVER FOR STANDARD DIPPERSTICK (- 802199).....	840
BACKHOE LINKAGE SHIELDS (- 802199)	907
BACKHOE LINKAGE SHIELDS (- 814526).....	908
BACKHOE LINKAGE SHIELDS (802200 -).....	909
BACKHOE LINKAGE, FIFTH FN LEVER FOR THREE LEVER CONTROLS (802200 -).....	868
BACKHOE MAIN FRAME (315D).....	904
BACKHOE MAIN FRAME(315D) (850000 -).....	442
BACKHOE RELIEF VALVES AND KITS (- 796276).....	977
BACKHOE RELIEF VALVES AND KITS (300D) (796277 -).....	967
BACKHOE RELIEF VALVES AND KITS (310D, 315D) (- 796276) ..	977
BACKHOE RELIEF VALVES AND KITS (310D, 315D) (796277 -) ..	978
BACKHOE RELIEF VALVES AND KITS (796277 -) ..	967, 968, 978, 979
BACKHOE RIPPER TOOTH.....	802
BACKHOE STABILIZER CYLINDER HYDRAULICS (300D, 310D).....	920
BACKHOE STABILIZER CYLINDER HYDRAULICS, SIDESHIFT 315D (- 814526).....	922
BACKHOE STABILIZER CYLINDER HYDRAULICS, SIDESHIFT 315D (850000 -).....	924
Backhoe Street Pads.....	880, 881, 882
BACKHOE STREET PADS (300D).....	880
BACKHOE STREET PADS (310D).....	881
BACKHOE STREET PADS (315D).....	882
BACKHOE SWING CYLINDER HYDRAULICS (300D) (802199 -).....	982
BACKHOE SWING CYLINDER HYDRAULICS (310D) (- 802199) ..	984
BACKHOE SWING CYLINDER HYDRAULICS (315D).....	988
BACKHOE VALVE AUXILIARY SECTION (300D).....	969
BACKHOE VALVE AUXILIARY SECTION (310D, 315D).....	980
BACKHOE VALVE BOOM SECTION (300D) (802200 -).....	965
BACKHOE VALVE BOOM SECTION (310D, 315D).....	974
BACKHOE VALVE BUCKET AND CROWD SECTION (300D) (802200 -).....	965
BACKHOE VALVE BUCKET AND CROWD SECTION (310D, 315D).....	974
BACKHOE VALVE INLET SECTION (300D) (802200 -).....	966
BACKHOE VALVE INLET SECTION (310D, 315D).....	976
BACKHOE VALVE OUTLET SECTION (300D) (802200 -).....	963
BACKHOE VALVE OUTLET SECTION (310D, 315D).....	971
BACKHOE VALVE PANEL FOUR LEVER (- 802199).....	870
BACKHOE VALVE PANEL, FOUR LEVER (802200 -).....	872
BACKHOE VALVE PANEL, THREE LEVER (- 802199).....	852
BACKHOE VALVE PANEL, THREE LEVER (SERIAL NO. 802200-) (- 802200).....	854
BACKHOE VALVE PANEL, TWO LEVER.....	454
BACKHOE VALVE PRESSURE AND RETURN HYDRAULICS (300D AND 310D) (802200 -).....	1008
BACKHOE VALVE PRESSURE AND RETURN HYDRAULICS (300D AND 310D) (850000 -).....	1010
BACKHOE VALVE PRESSURE AND RETURN HYDRAULICS (300D) (- 802199).....	1002
BACKHOE VALVE PRESSURE AND RETURN HYDRAULICS (310D AND 315D) (- 802199).....	1004
BACKHOE VALVE PRESSURE AND RETURN HYDRAULICS (310D AND 315D) (- 814526).....	1006
BACKHOE VALVE, SWING SECTION (300D) (802200 -).....	964
BACKHOE VALVE, SWING SECTION (310D, 315D).....	972
BACKHOE, FOUR-LEVER CONTROLS, STANDARD (- 802199) ..	870, 874
BACKHOE, FOUR-LEVER CONTROLS, STANDARD (802200 -).....	872
BACKHOE, LEVER CONTROLS (- 802199).....	832
BACKHOE, LEVER CONTROLS (- 814526).....	834
BACKHOE, THREE LEVER CONTROL VALVE LINKAGE (SERIAL NO. 802200-) (- 802200).....	854
BACKHOE, THREE LEVER CONTROL VALVE LINKAGE, (SERIAL NO. 802200-) (- 802200).....	856
BACKHOE, THREE-LEVER CONTROL VALVE LINKAGE, EXTENDIBLE (SER.NO.802199) (- 802199).....	860
BACKHOE, THREE-LEVER CONTROL VALVE LKG., EXTENDIBLE (SERIAL NO.-802199 (- 802199).....	858
BACKHOE, THREE-LEVER CONTROLS, STANDARD (- 802199).....	850, 852
BACKREST ADJUSTMENT ANGLE 300D	500
BAFFLE,RADIATOR.....	258, 260
BALANCER SHAFT, ENGINE.....	216
BALL JOINT ASSEMBLY (MFWD) (- 796033).....	88
BALL JOINT ASSEMBLY (MFWD) (796034 -).....	90
BANK, FRONT AXLE GREASE (- 802199).....	372
BANK, FRONT AXLE GREASE (- 814526).....	373

Alphabetical Index - Continued

Page	Page		
BANK, FRONT AXLE GREASE (802200 -).....	374	Bellcrank, Loader Control Valve Linkage (802200 -).....	692
BANK, FRONT AXLE GREASE (850000 -).....	375	Bellcrank, Loader Control Valve Linkage (850000 -).....	694
BAR LOCK, BACKHOE (300D, 310D).....	902	Bellcrank, Stabilizer Valve Linkage (- 802199).....	824
BAR, CYLINDER SERVICE LOCK.....	342	Bellcrank, Stabilizer Valve Linkage (- 814526).....	826
BAR, CYLINDER SERVICE LOCK (- 803113).....	340	Bellcrank, Stabilizer Valve Linkage (802200 -).....	828
Bar, Grille and Grille Housing (- 802199).....	584	Bellcrank, Stabilizer Valve Linkage (850000 -).....	830
Bar, Grille and Grille Housing (- 814526).....	585	Bellcrank, Third Function Loader Control Valve Linkage (- 802199).....	696
Bar, Grille and Grille Housing (850000 -).....	588	Bellcrank, Third Function Loader Control Valve Linkage (- 814526).....	698
Bar, Grille and Grille Housing (802200 -).....	586	Bellcrank, Third Function Loader Control Valve Linkage (802200 -).....	700
Bar, LOADER BOOM SERVICE LOCK BAR (- 803113).....	340	Bellcrank, Third Function Loader Control Valve Linkage (850000 -).....	702
Bar, Seat Base With Turntable (With Suspended Seat) (- 815114).....	490	Bellcrank, THREE LEVER CONTROL VALVE LINKAGE (- 802200).....	856
Bar, STABILIZER AND SLIDING FRAME.....	904	Bellcrank, Three-Lever Control Valve Linkage (Extendible Backhoe) (- 802199).....	858
BARREL, STEERING CYLINDER (MFWD) (796034 -).....	324	Bellcrank, Three-Lever Control Valve Linkage (Standard Backhoe) (- 802199).....	850
BARS, TIE (315D) (- 814526).....	906	Bellcrank, Transfer Case Assembly (MFWD).....	142
BASE, SEAT WITH NON-SUSPENDED SEAT 300D.....	494, 510	BELT, A/C COMPRESSOR DRIVE (790702 -).....	556
BASE, SEAT WITH SUSPENDED SEAT (- 815114).....	490	Belt, Adjuster Belt, Seat Base With Turntable (With Suspended Seat) (- 815114).....	490
BATTERIES,DUAL (802200 -).....	384	BELT, AIR CONDITIONING COMPRESSOR (- 790701).....	554
BATTERIES,DUAL (850000 -).....	386	Belt, Belt Kit, Seat Base And Seat Support (With Non-Suspended Seat).....	494
Battery Box (- 802199).....	580	BELT, FAN.....	242
Battery Box (- 814526).....	581	Belt, Seat Base And Seat Support (With Non-Suspended Seat).....	510
Battery Box (802200 -).....	582	Belt, Seat Belt, One Piece Vinyl Seat and Seat Belt (With Non-Suspended Seat).....	496
Battery Box (850000 -).....	583	Belt, Seat Belt, Seat Adjuster (With Suspended Seat) (- 815114).....	488
BATTERY BOX LOCK (802200 -).....	582	Belt, Seat Belt, Seat Base With Turntable (With Suspended Seat) (- 815114).....	490
BATTERY BOX LOCK (850000 -).....	583	Belt, Seat Belt, SEAT CUSHIONS AND ARM RESTS.....	492
BATTERY CABLES, DUAL (- 802199).....	380	Belt, Seat Belt, SEATS, SEAT BELTS, AND ARM REST.....	500
BATTERY CABLES, DUAL (- 814526).....	382	BELT, SEAT FOR ONE-PIECE VINYL SEAT.....	496
BATTERY CABLES, SINGLE.....	378	Belt, Seat Suspension And Shock Absorber (With Suspended Seat).....	506
BATTERY CLAMP, SINGLE.....	378	BELTS, SEAT 300D.....	500
BATTERY CLAMPS, DUAL (- 802199).....	380	BELTS, SEAT WITH SUSPENDED SEAT (- 815114).....	488
BATTERY CLAMPS, DUAL (- 814526).....	382	BELTS, SEAT, 300D.....	492
BATTERY COVER (- 802199).....	580	BELTS, TETHER WITH NON-SUSPENDED SEAT 300D.....	494, 510
BATTERY COVER (- 814526).....	581	BETWEEN SECTION SEAL KIT (- 802199).....	739
BATTERY COVER (802200 -).....	582	BETWEEN SECTION SEAL KIT (- 814526).....	740
BATTERY COVER (850000 -).....	583	BETWEEN SECTION SEAL KIT (300D) (- 802199).....	961
BATTERY COVER, SINGLE.....	378	BEVEL GEARS, DIFFERENTIAL (MFWD) (- 796033).....	100, 104
BATTERY COVERS, DUAL (- 802199).....	380	BEVEL GEARS, DIFFERENTIAL (MFWD) (796034 -).....	102, 106
BATTERY COVERS, DUAL (- 814526).....	382	BLADE, FAN.....	262
BATTERY INSTALLATION, DUAL (- 802199).....	380	BLADE, WIPER.....	474
BATTERY INSTALLATION, DUAL (- 814526).....	382	Blade, Wiper Blade, Cab One Piece Front Windshield Glass And Wiper Motor (W/O Right Cab Door).....	478
BATTERY INSTALLATION, SINGLE.....	378	Blade, Wiper Blade, Left-Hand Cab Door And Wiper (Two Door).....	474
Battery, Battery Booster Cables, Dual Battery Installation (- 802199).....	380	Blade, Wiper Blade, RIGHT-HAND CAB DOOR AND WIPER.....	476
Battery, Battery Booster Cables, Dual Battery Installation (- 814526).....	382	Blade, Wiper Blade, UPPER REAR CAB WINDOW AND REAR WINDOW WIPER MOTOR.....	470
Battery, Battery Booster Cables, Dual Battery Installation (802200 -).....	384	Block Assembly, Complete.....	186
Battery, Battery Booster Cables, Dual Battery Installation (850000 -).....	386	BLOCK, CHOCK (315D).....	904
Battery, Battery Box, Battery Box (- 802199).....	580	BLOCK, CYLINDER (- 362468).....	182
Battery, Battery Box, Battery Box (- 814526).....	581	BLOCK, CYLINDER (362469 -).....	184
Battery, Battery Box, Battery Box (802200 -).....	582	BLOCK, ENGINE SHORT.....	186
Battery, Battery Box, Battery Box (850000 -).....	583	BLOCK, MAIN FRAME TRUNNION (- 802199).....	438
Battery, Battery Cable, Dual Battery Installation (- 802199).....	380	BLOCK, MAIN FRAME TRUNNION (802200 -).....	440
Battery, Battery Cable, Dual Battery Installation (- 814526).....	382	BLOWER ASSEMBLY (816287 -).....	550
Battery, Battery Cable, Single Battery Installation.....	378	Blower Assembly (850000 -).....	552
Battery, Dry Charged Battery, Dual Battery Installation (- 802199).....	380	BLOWER MOTORS, STANDARD HEATER (- 802199).....	544
Battery, Dry Charged Battery, Dual Battery Installation (- 814526).....	382	BLOWER MOTORS, STANDARD HEATER (- 814526).....	546
Battery, Dry Charged Battery, Dual Battery Installation (802200 -).....	384	Blower, BLOWER ASSEMBLY (816287 -).....	550
Battery, Dry Charged Battery, Dual Battery Installation (850000 -).....	386	Blower, Blower Assembly (850000 -).....	552
Battery, Dry Charged Battery, Single Battery Installation.....	378	Blower, Blower Motor, BLOWER ASSEMBLY (816287 -).....	550
BEACON, ROTATING.....	392	Blower, Blower Motor, Blower Assembly (850000 -).....	552
BEARING BOLT (MFWD) (- 796033).....	92	Blower, CAB HEATER AND AIR CONDITIONING BLOWER MOTOR (802200 - 816286).....	548
BEARING, ALTERNATOR (778741 - 787513).....	389	Blower, Fan, Alternator And Attaching Parts (- 817881).....	390
BEARING, FRONT WHEEL (WITHOUT MFWD).....	80	Blower, Fan, Alternator And Attaching Parts (817882 -).....	391
BEARINGS CRANKSHAFT.....	175	Blower, Fan, CAB HEATER MOTORS AND MOUNTING BRACKETS (- 802199).....	544
BEARINGS, CONNECTING ROD.....	180	Blower, Fan, Cab Heater Motors And Mounting Brackets (- 814526).....	546
BEARINGS, MAIN.....	174	Blower, Suction Fan, Fan Blade.....	262
Bellcrank, Bucket Leveling and Return-to-Dig Linkage (- 802199).....	680	BODY, RELIEF VALVE (802200 -).....	762
Bellcrank, Bucket Leveling and Return-to-Dig Linkage (- 814526).....	682	BODY, RELIEF VALVE (850000 -).....	764
Bellcrank, Bucket Leveling and Return-to-Dig Linkage (802200 -).....	684	BOLT, BEARING (MFWD) (- 796033).....	92
Bellcrank, Bucket Leveling and Return-to-Dig Linkage (850000 -).....	686	Bonnet, Hood, HOOD AND ENGINE SIDE SHIELDS (- 802199).....	574
Bellcrank, DIFFERENTIAL LOCK PEDAL AND LINKAGE (- 802199).....	71	Bonnet, Hood, Hood And Engine Side Shields (- 814526).....	576
Bellcrank, Differential Lock Pedal and Linkage (- 814526).....	72		
Bellcrank, DIFFERENTIAL LOCK PEDAL AND LINKAGE (802200 -).....	73		
Bellcrank, Differential Lock Pedal and Linkage (850000 -).....	74		
Bellcrank, Four-Lever Control Valve Linkage (For Standard Backhoe) (- 802199).....	870		
Bellcrank, Four-Lever Control Valve Linkage (For Standard Backhoe) (802200 -).....	872		
Bellcrank, Loader Control Valve Linkage (- 802199).....	688		
Bellcrank, Loader Control Valve Linkage (- 814526).....	690		

Alphabetical Index - Continued

Page	Page
Bonnet, Hood, HOOD COWL AND ENGINE SIDE SHIELDS (802200 -)	578
BOOM CYL. KIT, CONTROLLED LOWERING DEVICE	1058
BOOM CYL. KIT, LOWERING DEVICE, CONTROLLED	1058
Boom Cylinder	798, 800, 1028, 1029
Boom Cylinder (AH136175 Cylinder) (- 818141)	1026
Boom Cylinder (Replacement Cylinder)	799, 801
Boom Cylinder Hydraulics	990, 992
BOOM CYLINDER HYDRAULICS (300D, 310D)	990
BOOM CYLINDER HYDRAULICS, BACKHOE (315D)	992
BOOM CYLINDER HYDRAULICS, LOADER (- 802199)	770
BOOM CYLINDER HYDRAULICS, LOADER (802200 - 807613)	774
BOOM CYLINDER HYDRAULICS, LOADER (807614 -)	776
BOOM CYLINDER HYDRAULICS, LOADER (814526 -)	772
BOOM CYLINDER HYDRAULICS, LOADER (850000 -)	778
BOOM CYLINDER PINS, BACKHOE (300D) (- 818141)	1026
BOOM CYLINDER PINS, BACKHOE (300D) (818142 -)	1027
BOOM CYLINDER PINS, BACKHOE (310D, 315D)	1028, 1029
BOOM CYLINDER REPAIR KIT	800, 801
BOOM CYLINDER REPAIR KIT, BACKHOE (300D) (- 818141)	1026
BOOM CYLINDER REPAIR KIT, BACKHOE (300D) (818142 -)	1027
BOOM CYLINDER REPAIR KITS, BACKHOE (310D, 315D)	1028, 1029
BOOM CYLINDER, BACKHOE (300D) (- 818141)	1026
BOOM CYLINDER, BACKHOE (300D) (818142 -)	1027
BOOM CYLINDER, BACKHOE (310D, 315D)	1028, 1029
BOOM CYLINDER, LOADER	798, 799, 800
BOOM CYLINDER, LOADER (REPLACEMENT)	801
BOOM LOCK CONTROL (850262 -)	864
Boom Lock Control (With Cable Control) (- 850261)	862
BOOM LOCK CONTROL (WITH LINKAGE CONTROL) (850262 -)	864
Boom Lock Lever (With Linkage And Rod Control) (Field Installed) (850262 -)	864
BOOM LOCK LINKAGE (- 850261)	862
BOOM LOCK LINKAGE (850262 -)	864
BOOM LOCK, SWING FRAME	902
BOOM PIN, BACKHOE	889, 890
BOOM SECTION (300D) (SERIAL NO. -797330) (- 797330)	945
Boom Section (797441 - 802199)	728
Boom Section (797441 - 814526)	729
Boom Section (Gresen) (- 797330)	945
Boom Section (Gresen) (797331 - 802199)	946
Boom Section (With Or With/Out Return To Dig) (- 784145)	724
Boom Section (With Or With/Out Return To Dig) (784146 - 797440)	726
Boom Section Positioner (- 784145)	731
BOOM SECTION POSITIONER (- 784145)	730
BOOM SECTION POSITIONER (784146 - 797440)	726
BOOM SECTION POSITIONER (784146 - 802199)	733
Boom Section Positioner (784146 - 814526)	734
BOOM SECTION VALVE (- 784145)	724
BOOM SECTION VALVE (784146 - 797440)	726
BOOM SECTION, BACKHOE VALVE (300D) (802200 -)	965
BOOM SECTION, BACKHOE VALVE (310D, 315D)	974
BOOM SECTION, LOADER CONTROL VALVE (802200 -)	752, 754
BOOM SECTION, LOADER CONTROL VALVE (850000 -)	753, 755
BOOM SECTION, LOADER VALVE (797441 - 802199)	728
BOOM SECTION, LOADER VALVE (797441 - 814526)	729
BOOM SERVICE LOCK BAR	342
BOOM SERVICE LOCK BAR (- 803113)	340
BOOM, BACKHOE	889, 890
BOOM, BUCKET AND CROWD SECTION	974
BOOM, BUCKET, AND CROWD SECTION (802200 -)	965
BOOM, LOADER	704
BOOT, CLUTCH DISCONNECT SWITCH (- 802199)	688
BOOT, CLUTCH DISCONNECT SWITCH (- 814526)	690
BOOT, CLUTCH DISCONNECT SWITCH (802200 -)	692
BOOT, CLUTCH DISCONNECT SWITCH (850000 -)	694
BOOT, MECHANICAL SUSPENDED SEAT	506
BOOT, TILT STEERING CYLINDER	318
BOOT, TRANSMISSION SHIFTER (- 796528)	110
BOOT, TRANSMISSION SHIFTER (796529 - 802199)	112
BOOT, TRANSMISSION SHIFTER (796529 - 814526)	114
BOOT, TRANSMISSION SHIFTER LEVER (802200 -)	116
BOOT, TRANSMISSION SHIFTER LEVER (850000 -)	118
BOTTOM WEAR PAD, EXTENDIBLE DIPPERSTICK (787832 -)	895
BOX, AIR CONDITIONING (- 850000)	534
BOX, AIR CONDITIONING (801200 - 816286)	530
BOX, AIR CONDITIONING (816287 -)	532, 536
BOX, AIR CONDITIONING (850000 -)	538
BOX, BATTERY (- 802199)	580
BOX, BATTERY (- 814526)	581
BOX, BATTERY (802200 -)	582
BOX, BATTERY (850000 -)	583
BOX, CAB HEATER (- -)	528
BOX, CAB HEATER (- 802199)	526
BOX, CAB HEATER (- 850000)	534
BOX, CAB HEATER (801200 - 816286)	530
BOX, CAB HEATER (816287 -)	532
BOX, CAB HEATER (816287 -)	536
BOX, CAB HEATER (850000 -)	538
BRACKET, AIR CLEANER (WITH TURBOCHARGER) (- 802199)	267
BRACKET, AIR CLEANER (WITH TURBOCHARGER) (- 814526)	268
BRACKET, AIR CLEANER (WITH TURBOCHARGER) (802200 -)	269
BRACKET, AIR CLEANER (WITH TURBOCHARGER) (850000 -)	270
BRACKET, AIR CLEANER (WITHOUT TURBOCHARGER) (- 802199)	272
BRACKET, AIR CLEANER (WITHOUT TURBOCHARGER) (- 814526)	273
BRACKET, AIR CLEANER (WITHOUT TURBOCHARGER) (802200 -)	274
BRACKET, AIR CLEANER (WITHOUT TURBOCHARGER) (850000 -)	275
BRACKET, ANTENNA	594
BRACKET, DOOR STOP (- 802199)	574
BRACKET, DOOR STOP (- 814526)	576
BRACKET, INTERIOR REAR VIEW MIRROR	596
BRACKET, LIGHT MOUNTING (ROPS)	396
BRACKET, MFWO SOLENOID	120
BRACKET, MOUNTING, CONTROL VALVE (- 802199)	688, 696
BRACKET, MOUNTING, CONTROL VALVE (- 814526)	690, 698
BRACKET, MOUNTING, CONTROL VALVE (802200 -)	700
BRACKET, MOUNTING, CONTROL VALVE (850000 -)	702
BRACKET, STEERING COLUMN	318
BRACKET, TOOLBOX	606
BRACKET, WINDSHIELD WASHER RESERVOIR	486
BRACKET, AIR CONDITIONING (790702 -)	556
BRACKET, FUEL FILTER (461566 -)	228
BRACKET, TRANSMISSION OIL PUMP (- 797883)	162
BRACKET, TRANSMISSION OIL PUMP (797884 -)	164
BRACKET, TRANSMISSION SHIFTER LEVER (802200 -)	116
BRACKET, TRANSMISSION SHIFTER LEVER (850000 -)	118
BRACKETS, SEAT 300D	500
BRACKETS, SEAT, 300D	492
BRACKETS, AIR CONDITIONING (- 802199)	544
BRACKETS, AIR CONDITIONING (- 814526)	546
BRACKETS, ALTERNATOR MOUNTING	240
BRACKETS, CAB HEATER (- 802199)	544
BRACKETS, CAB HEATER (- 814526)	546
BRACKETS, CONDENSER (- 814526)	568
BRACKETS, CONDENSER (- 816286)	566
BRACKETS, CONDENSER (816287 -)	570
BRACKETS, CONDENSER (850000 -)	572
BRAKE ASSEMBLY, REVERSE	154
BRAKE BAND	334
BRAKE BAND, LINING AND LINKAGE	334
Brake Disk (- 796851)	326
BRAKE DISK (- 796851)	326, 327
Brake Disk (796852 -)	328
BRAKE DISK (796852 -)	328
BRAKE LIGHT (ROPS)	396, 400
BRAKE LIGHT SWITCH	330
BRAKE LINE, TRANSMISSION	166
BRAKE LINE, TRANSMISSION (797884 -)	168
BRAKE LINE, TRANSMISSION (802200 -)	172
BRAKE LINE, TRANSMISSION (850000 -)	173
BRAKE LINING	334
BRAKE LINKAGE	334
BRAKE PEDAL	330
BRAKE PLATE (- 796851)	326, 327
BRAKE PLATE (796852 -)	328
BRAKE SERVICE, HYDRAULICS	332
BRAKE VALVE	330
Brake Valve and Pedals	330
Brake, Brake Band, BRAKE BAND, LINING AND LINKAGE	334
Brake, Brake Disk, Brake Disk (- 796851)	326
Brake, Brake Drum, Differential Assembly	70
Brake, Brake Line, Transmission Brake Oil Lines And Fittings	166
Brake, Brake Line, Transmission Brake Oil Lines And Fittings (797884 -)	168
BRAKE, PARK	336
Brake, SERVICE BRAKE UPDATE KIT (- 796851)	327
BRAKE, TRANSMISSION OIL PUMP (- 797883)	162
BRAKE, TRANSMISSION OIL PUMP (797884 -)	164
BRAKING WEDGE (315D)	904
BREATHER FILTER, HYDRAULIC RESERVOIR (- 802199)	620
BREATHER FILTER, HYDRAULIC RESERVOIR (- 814526)	622